

BALLARD

Enter parking lot on
NW 67th St.

Use street parking if
lot is full.



BISHOP BLANCHET

Enter parking lot on N 82nd St.

Parking is available down by the grassy knoll.

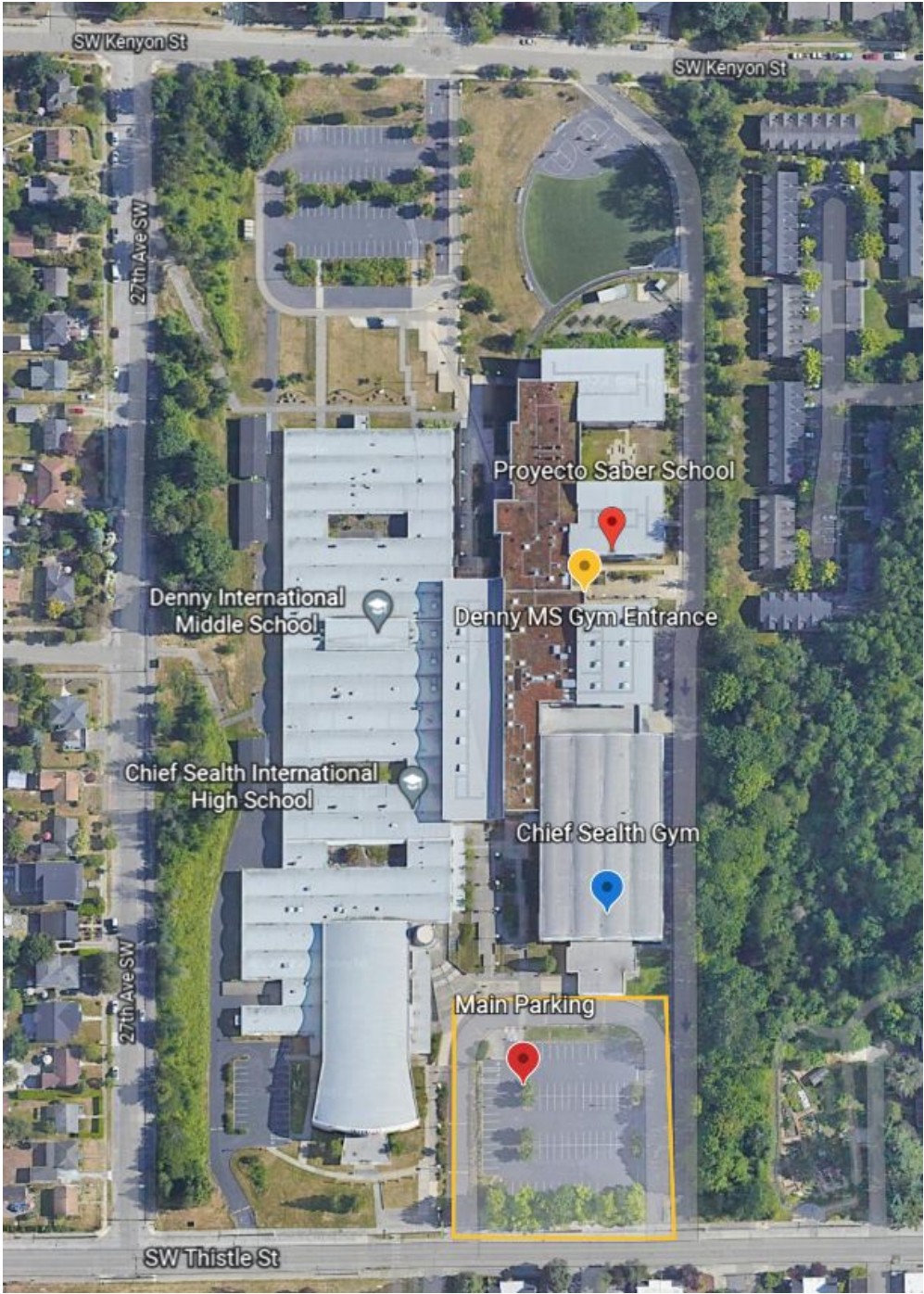


CHIEF SEALTH

Enter parking lot from Thistle (note – it is the *second* driveway if you are coming from the east – there are two right next to each other, and the first one is do not enter but the second is for parking).

Depending on arrival time, main parking gate may be locked (it is locked during school release time). Street parking is available on Thistle and 27th.

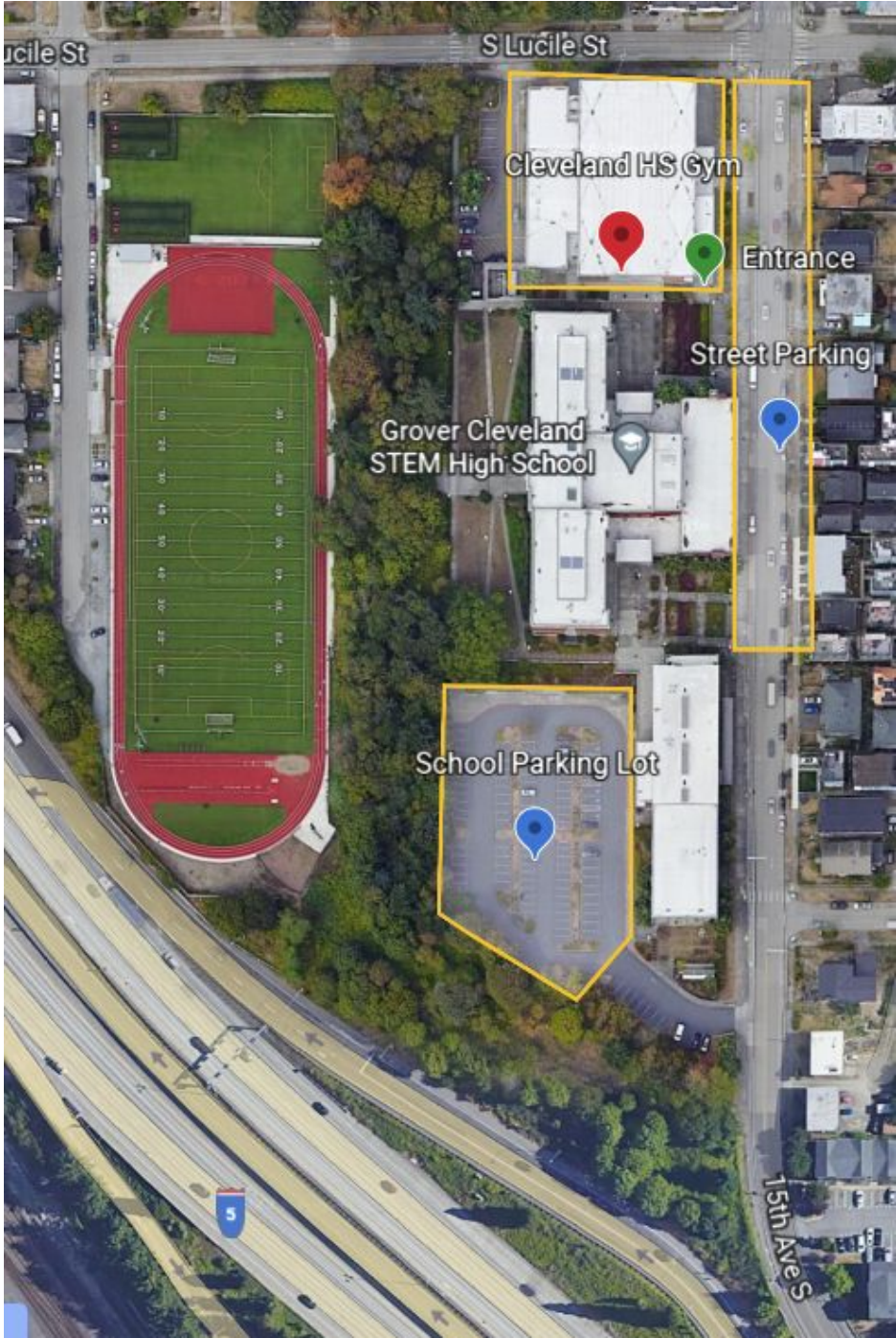
If arriving from Kenyon, the access road can be taken (and occasionally has parking) to cut through.



CLEVELAND

Cleveland gym is furthest building north. You can find street parking on 15th or use the lot and hike.

“Main” gym doors (from upper courtyard) aren’t always unlocked – use the entrance near the street to enter at gym level.



EASTSIDE CATHOLIC

Gym is up the hill from the parking lot. There will be a barrier half blocking access to the hill from the roundabout:



If you need accessible parking and have a placard, drive around the barrier to access it up the hill. There is *limited* other parking *sometimes* available closer to the gym as well. If a reserved space *does not* have a specific reservation in the box, it is available.

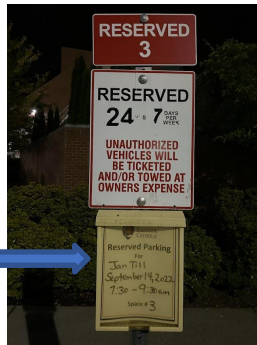


Available Space:



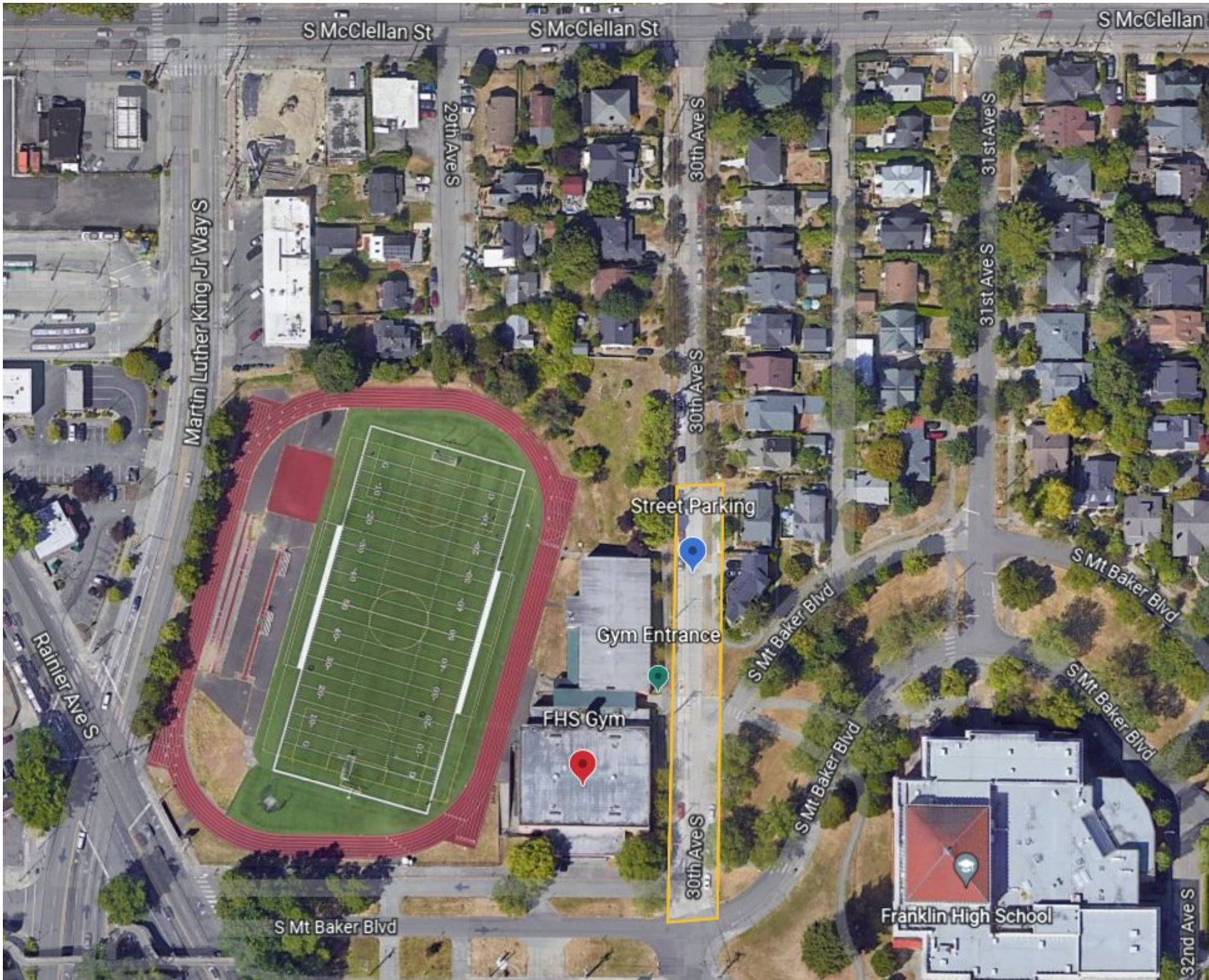
UNavailable Space:

Reserved times



FRANKLIN

Street parking only – 30th Ave S is the best option.



GARFIELD

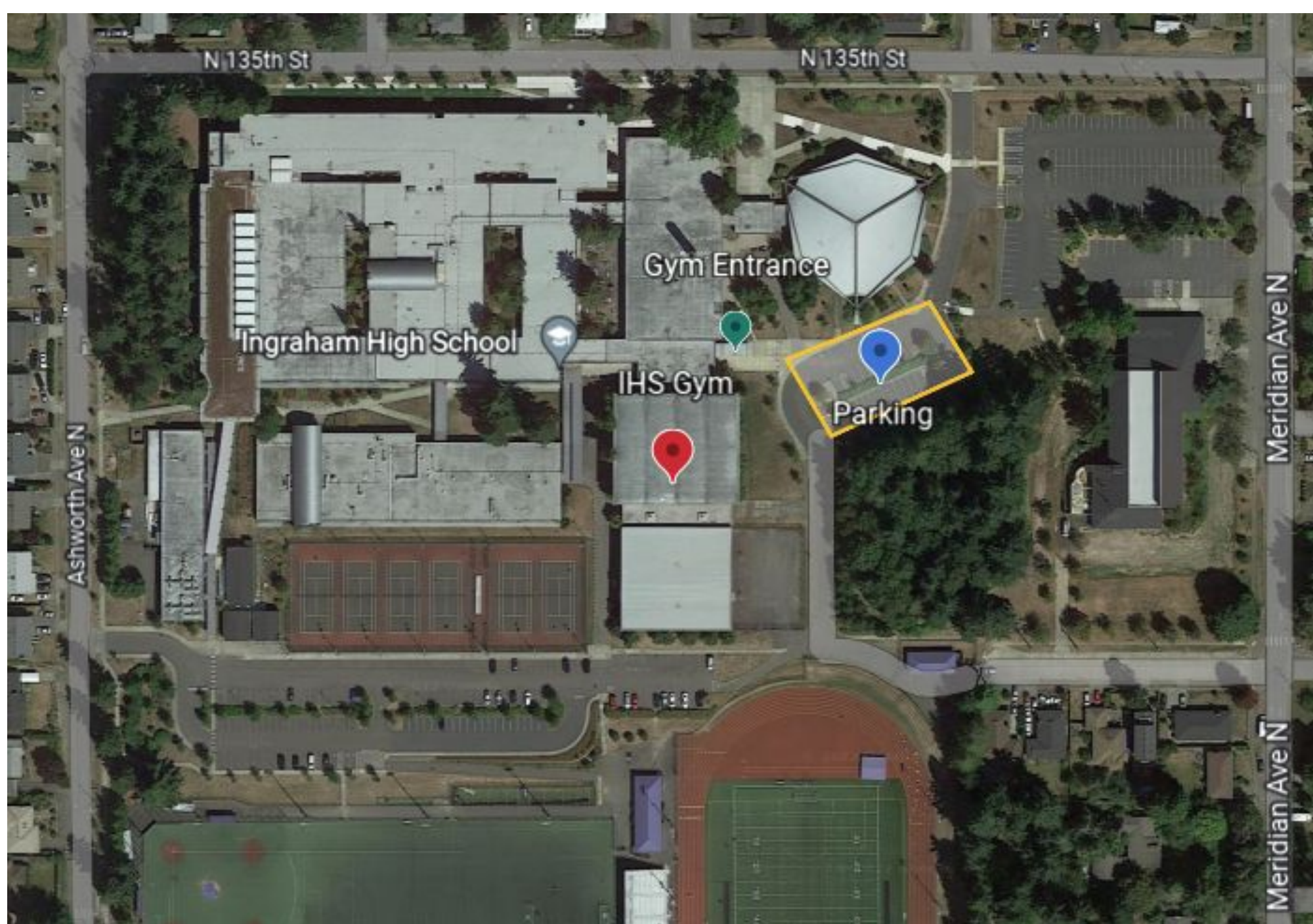


HOLY NAMES

Parking garage is accessed from 22nd AVE E. A parking attendant should be available to direct you. Take either stairs or elevator to the main floor of school.



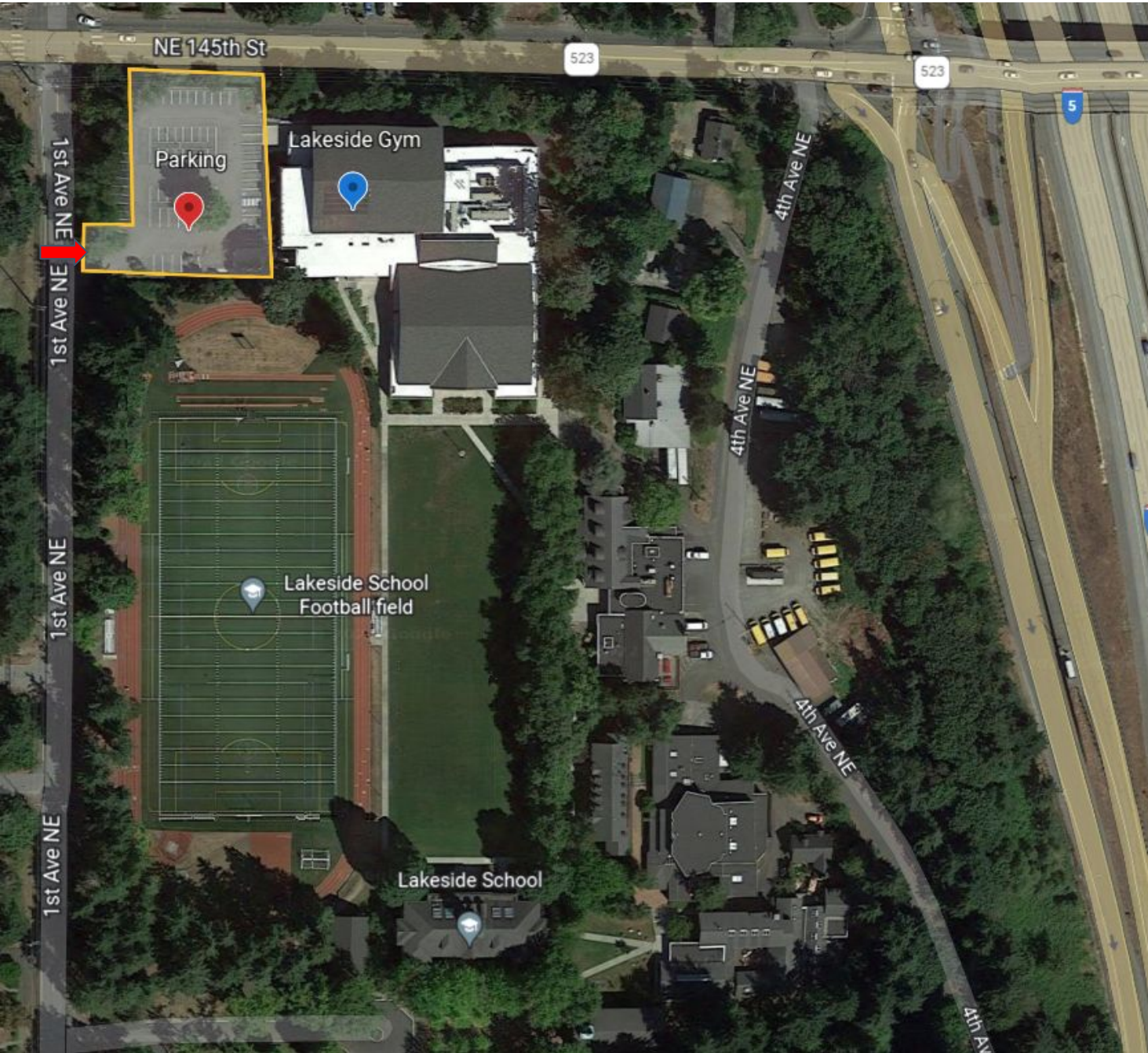
INGRAHAM



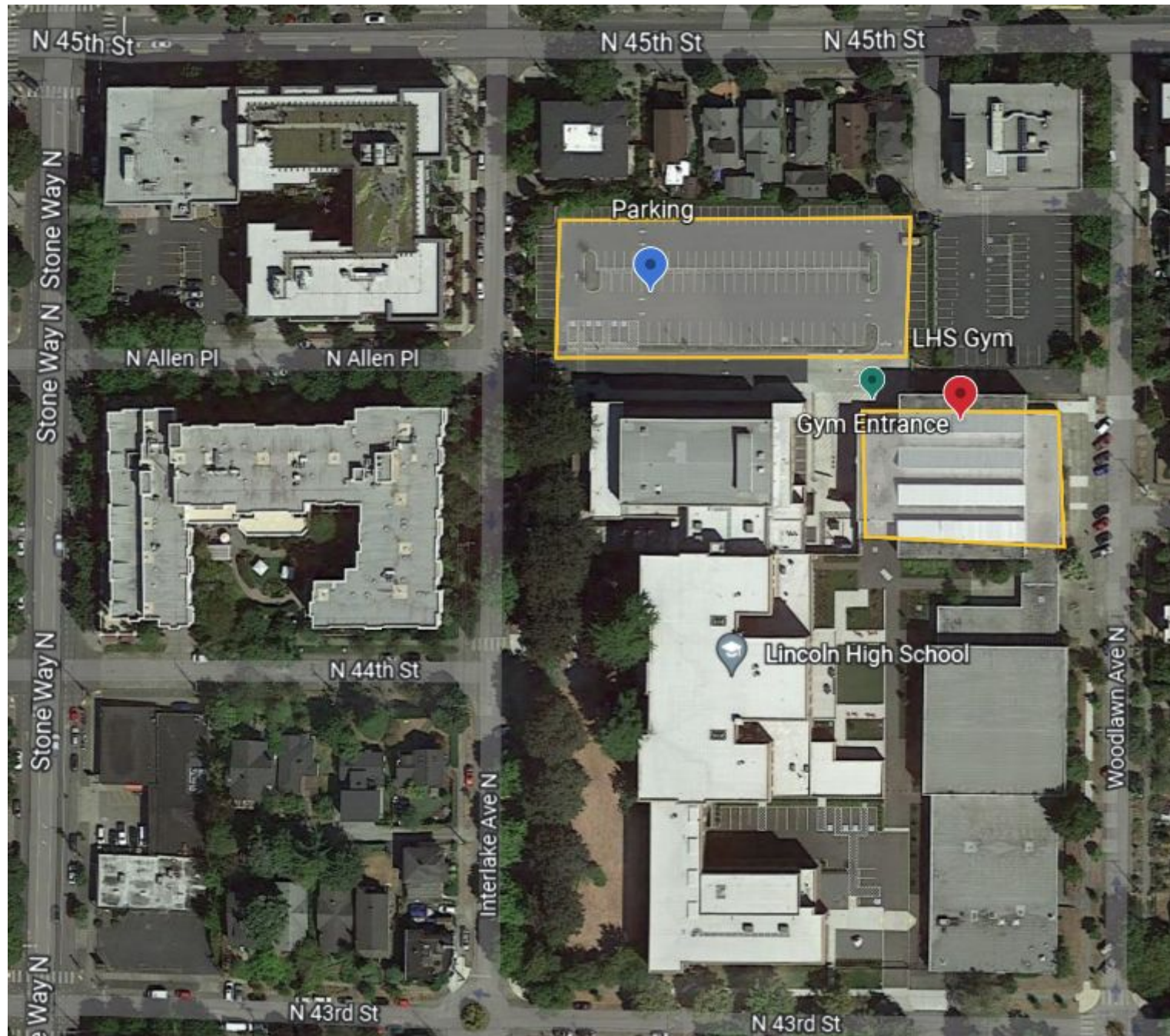
LAKESIDE

GPS will not take you to the correct location.

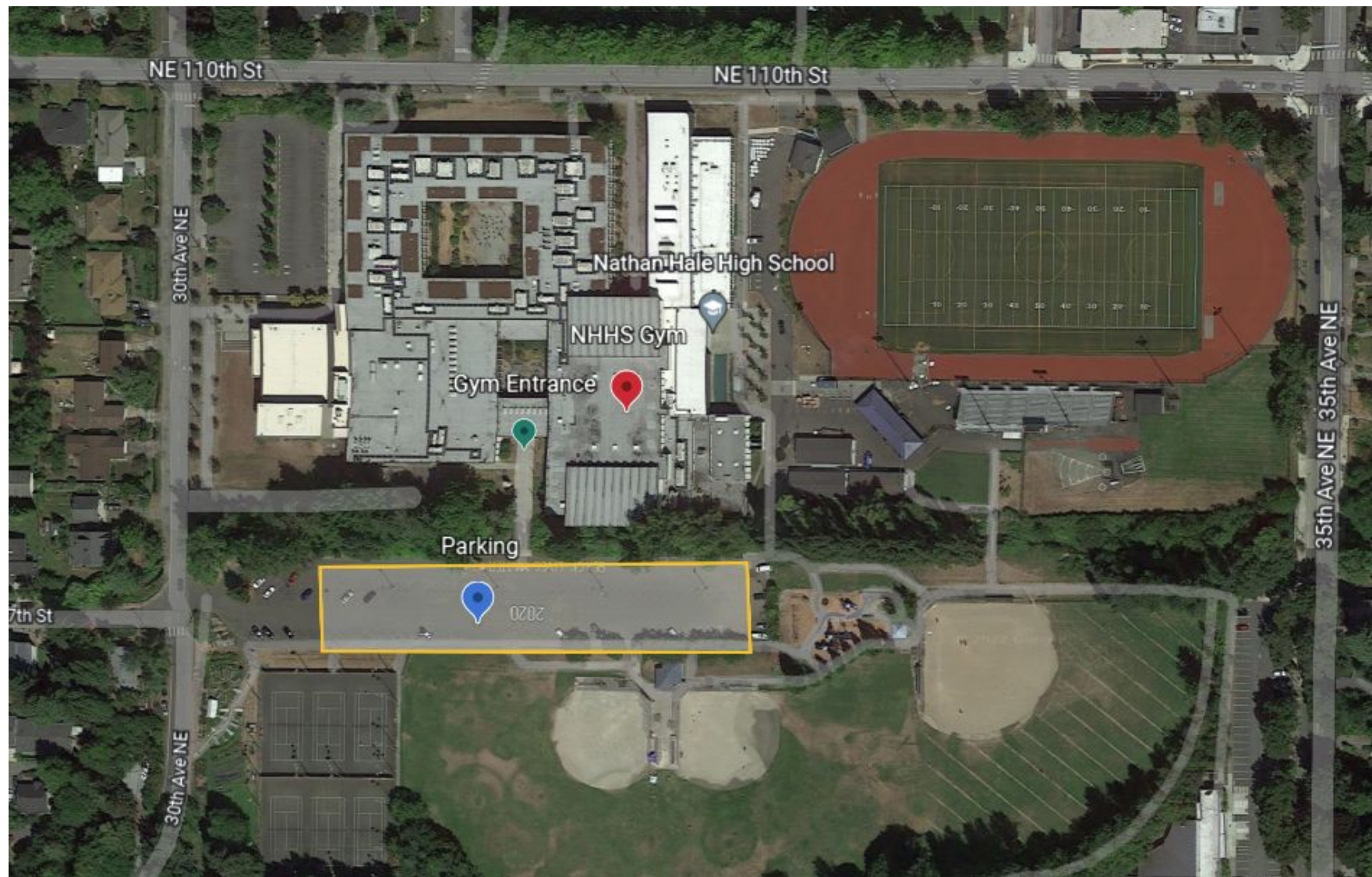
Enter parking lot from 1st Ave NE just south of the intersection with NE 145th St.



LINCOLN



NATHAN HALE



RAINIER BEACH

Main lot entrance is from Henderson.

If alternate parking is needed, enter behind the school by taking a left from Seward onto Hamlet, then a left on 53rd and looping around.

Street parking is also sometimes available on Seward



ROOSEVELT

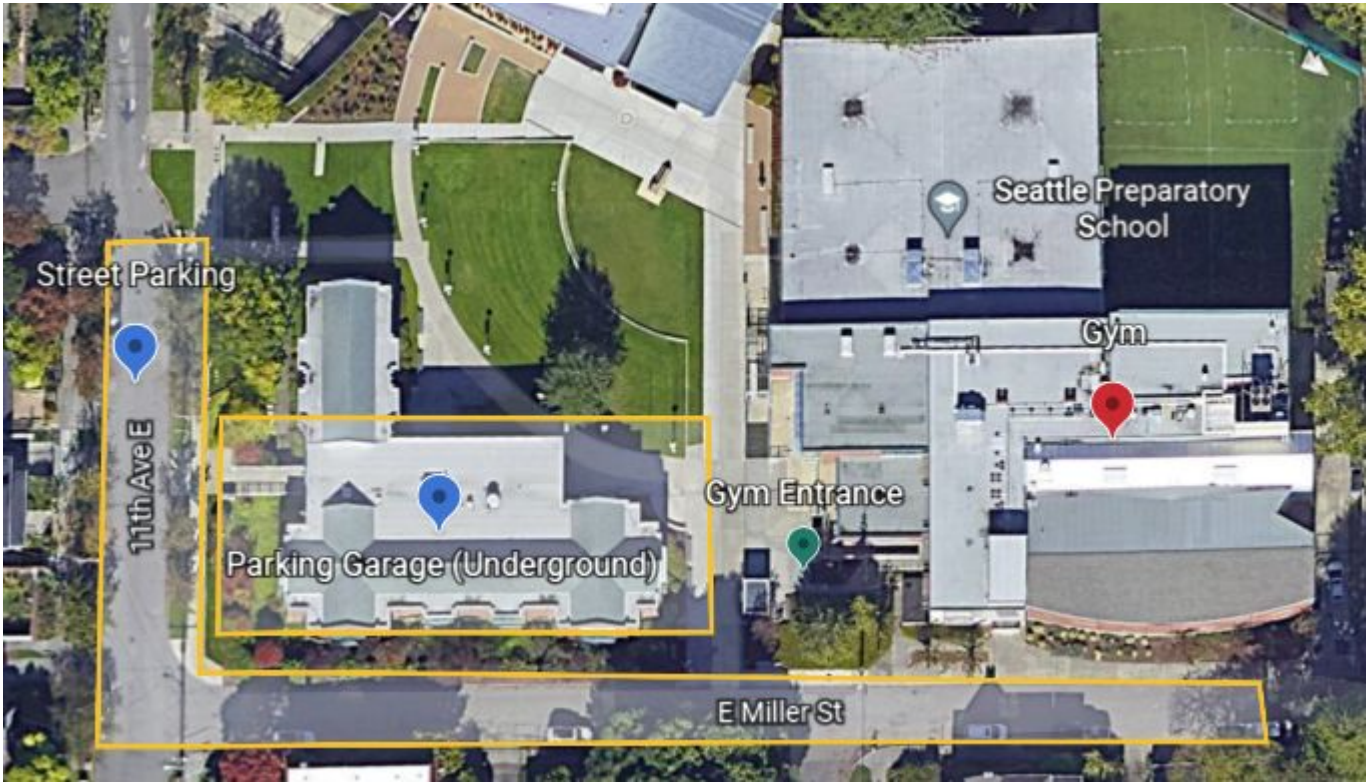
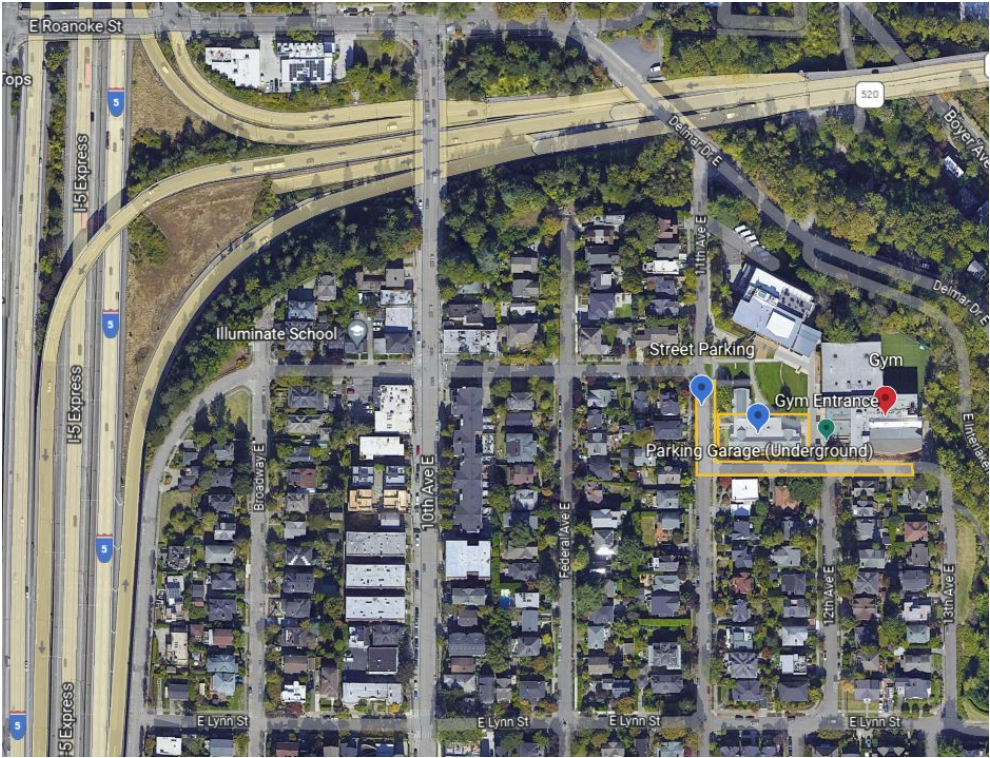
Enter parking lot on 12th Ave NE.
If parking lot is full, you can park on the street.



SEATTLE PREP

Street parking is free. There is a flight of stairs that goes from street level down to the gym entrance.

Or you can enter the parking garage if driving south on 11th Ave E. The exit from the garage leads to the gym.



WEST SEATTLE

